

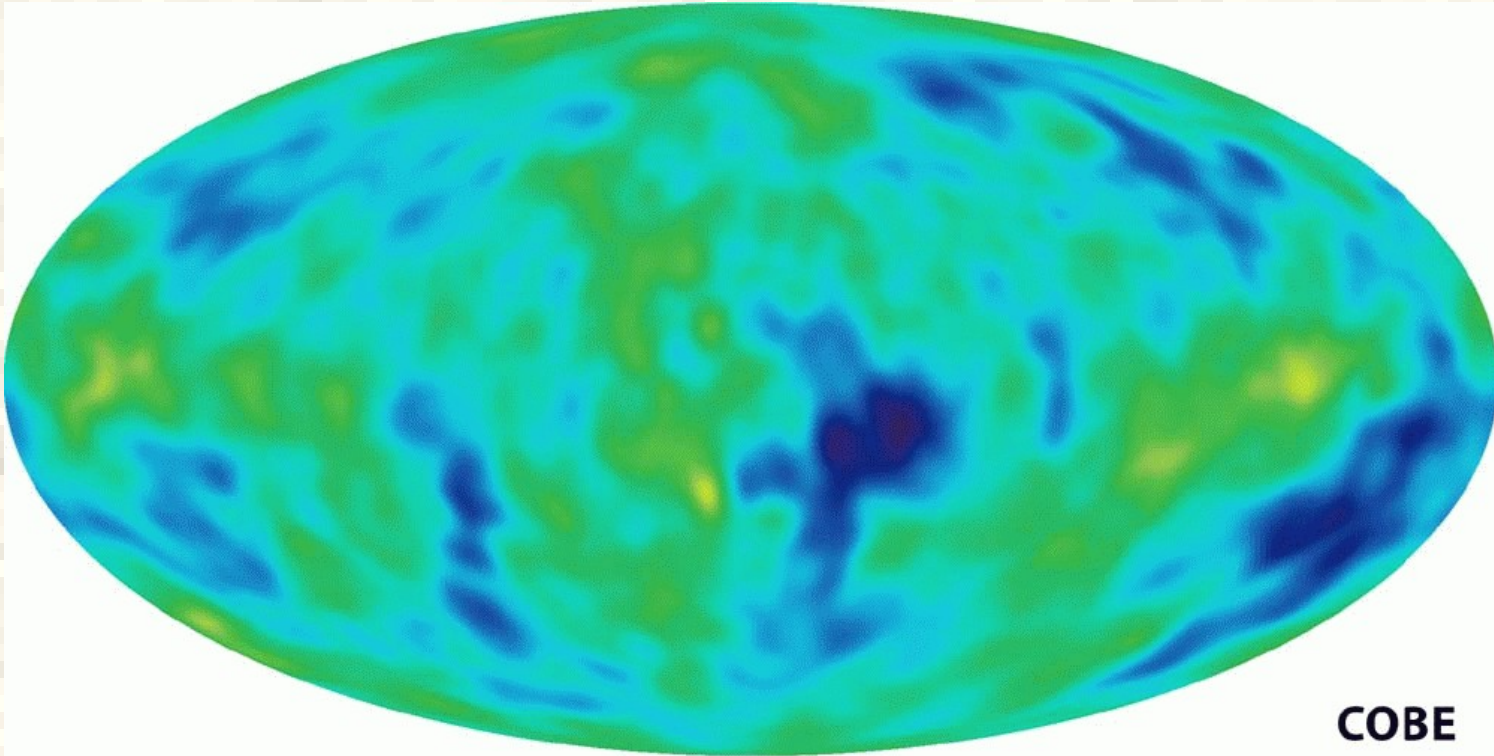
“Нехорошие” пятна в СМВ

Naselsky et al., 2007, [arXiv:0712.1118](#)

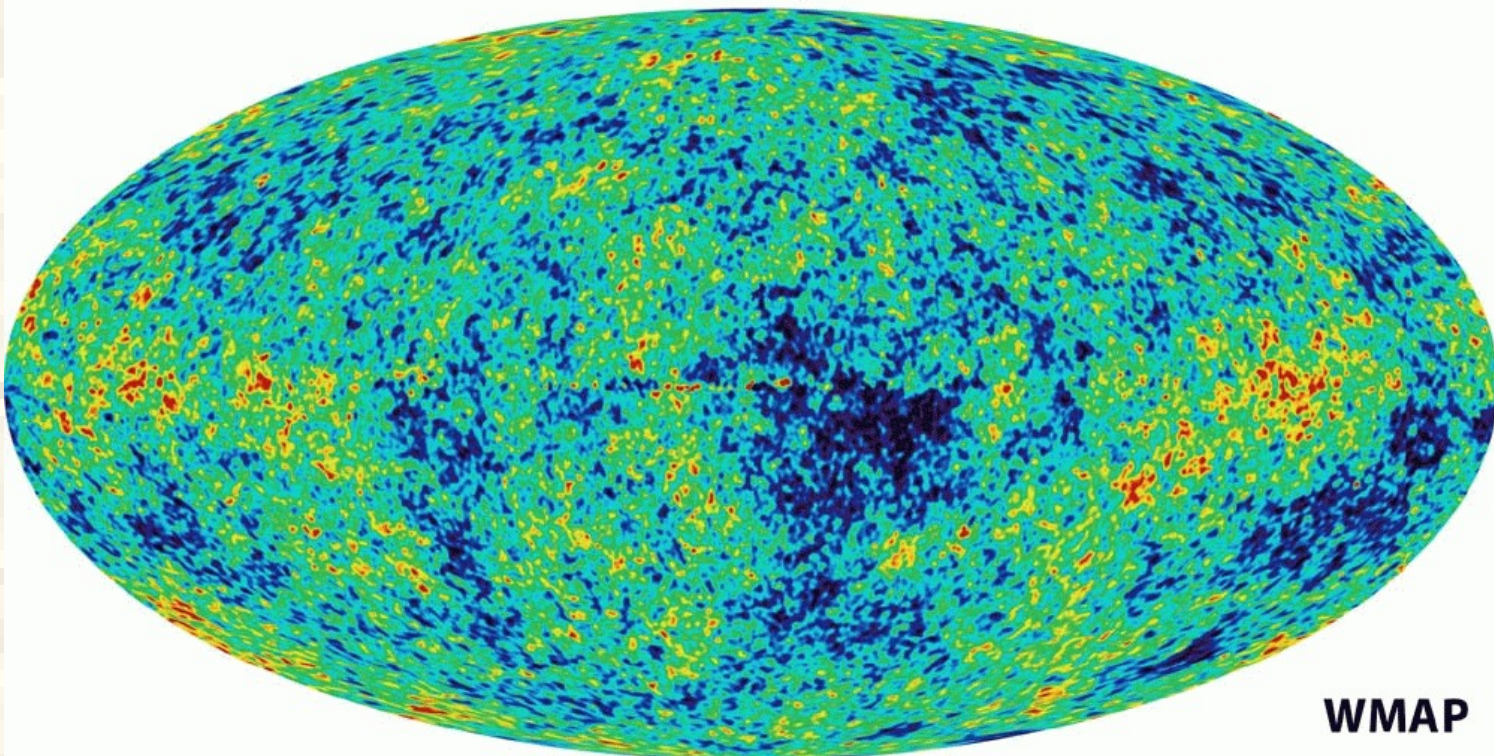
Олег Верходанов

Специальная астрофизическая обсерватория

Нижний Архыз, Россия

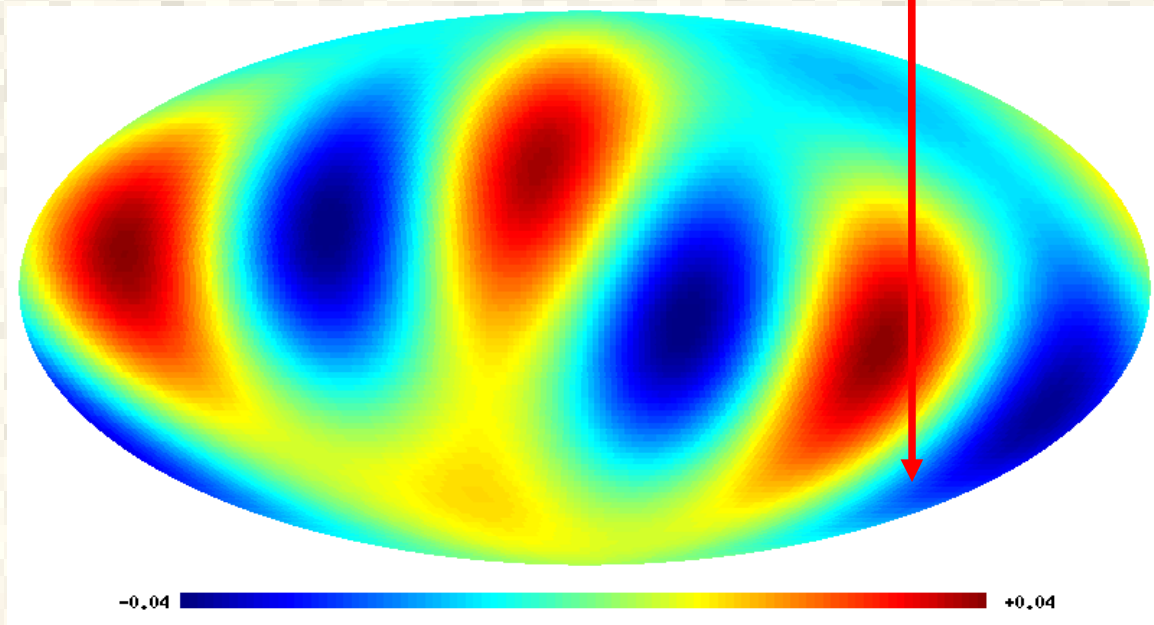
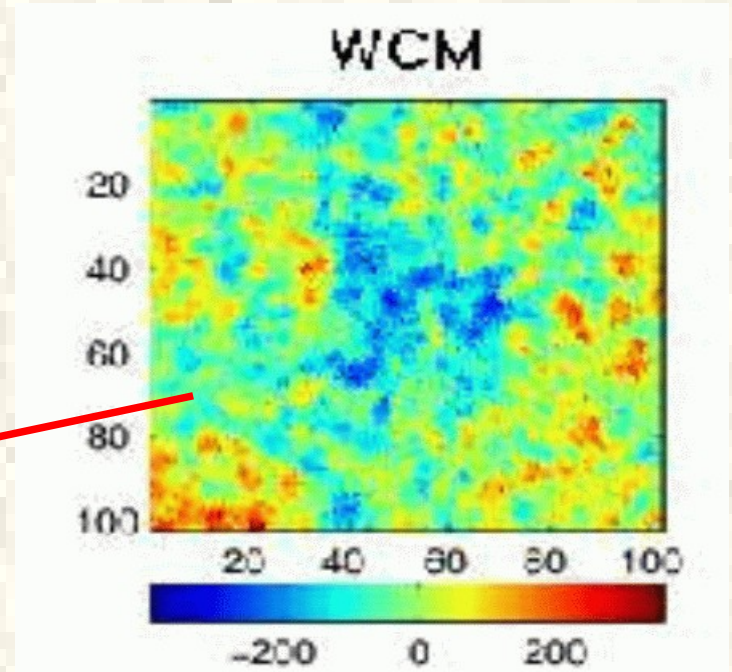
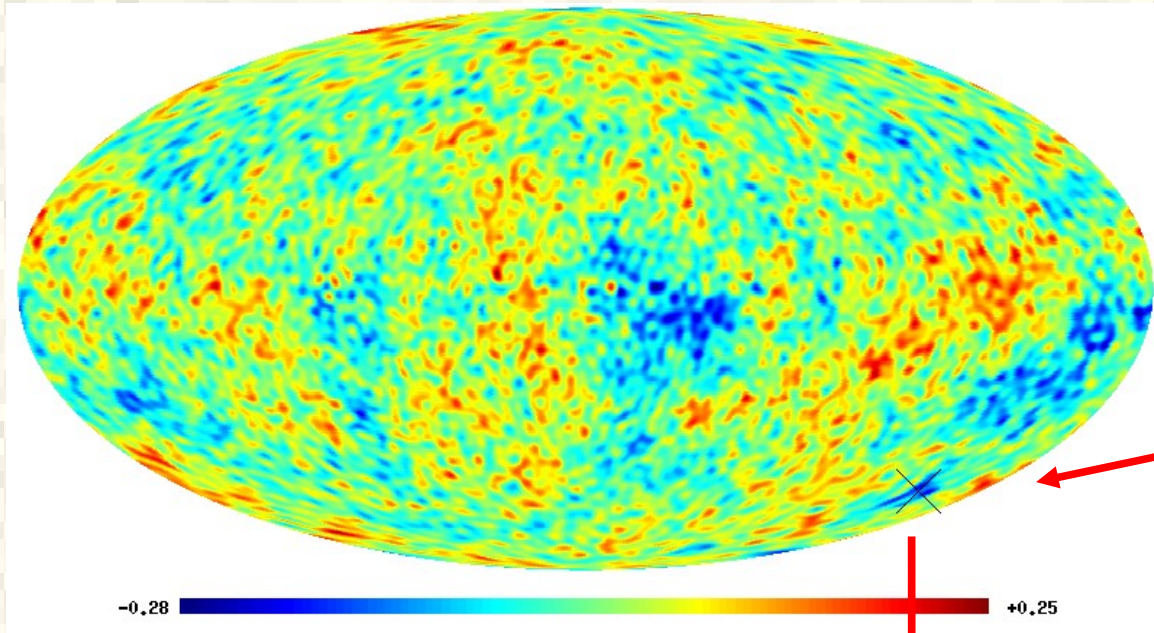


COBE



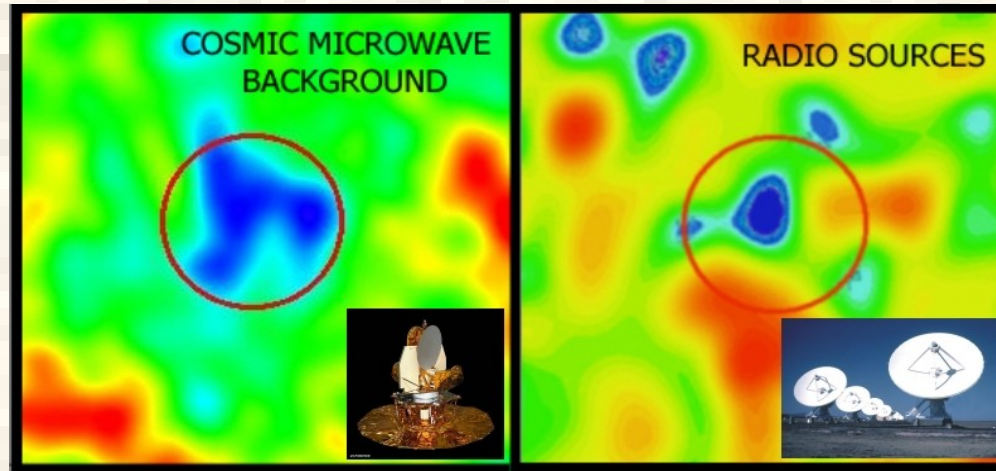
WMAP

О чем речь ?

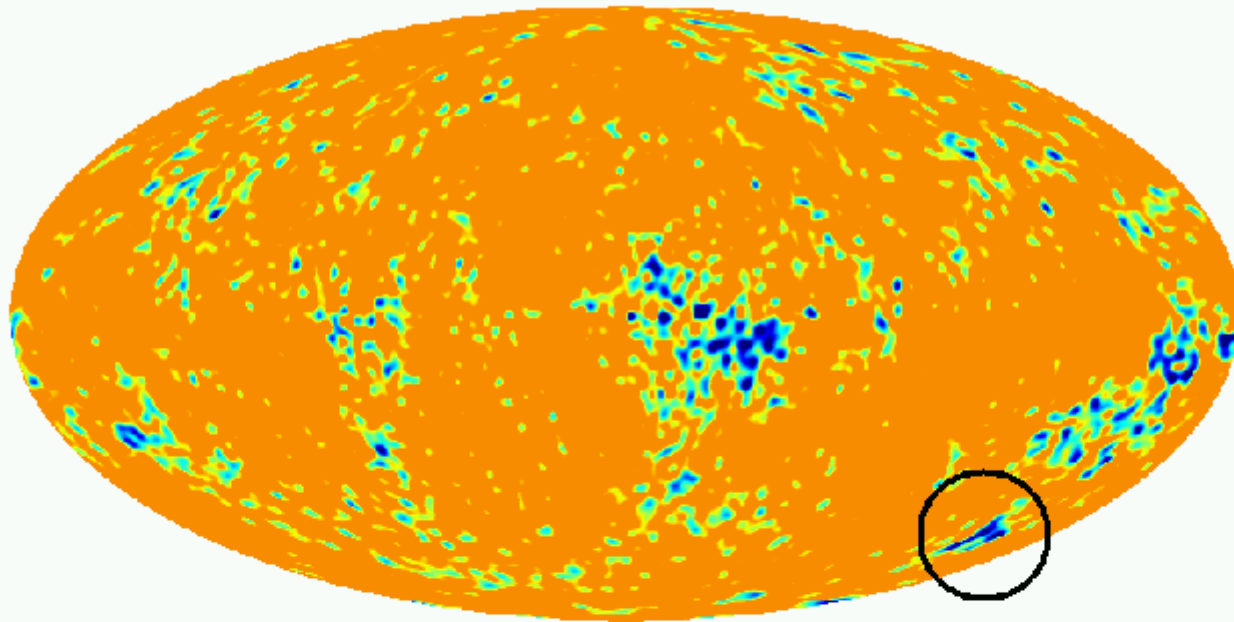


$(b=-57deg, l=209deg)$
ПЯТНО НЕГАУССОВО
(Vielva et al., 2004)

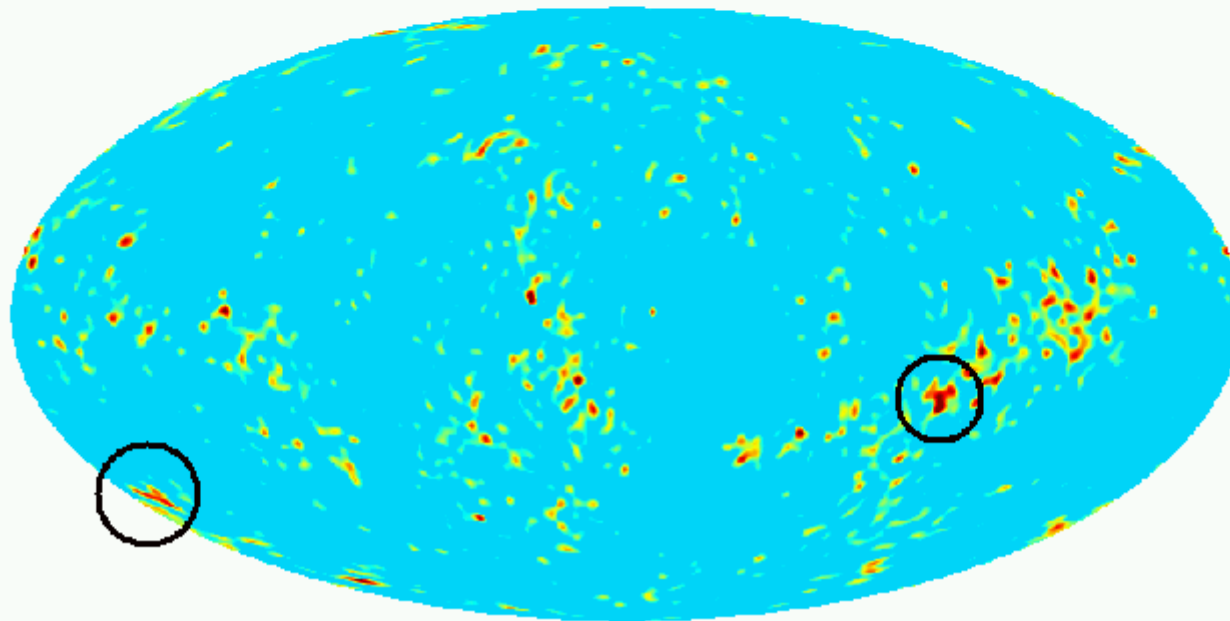
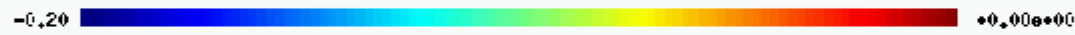
(Rudnick et al., 2007): Sachs-Wolfe effect ?



(Jaffe et al., 2005, 2006) – Bianchi VIIh anisotropic model ?
(Crus et al., 2007) – cosmic texture ?

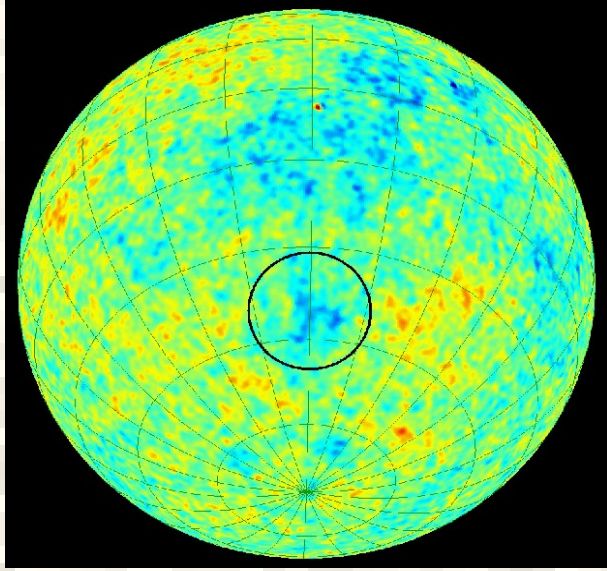


Обрезание
 $-0.2 < \Delta T < -0.05$

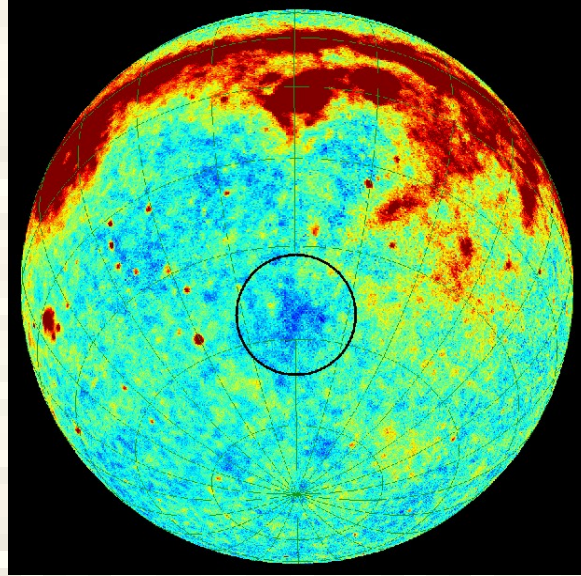


$0.05 < \Delta T < 0.2$

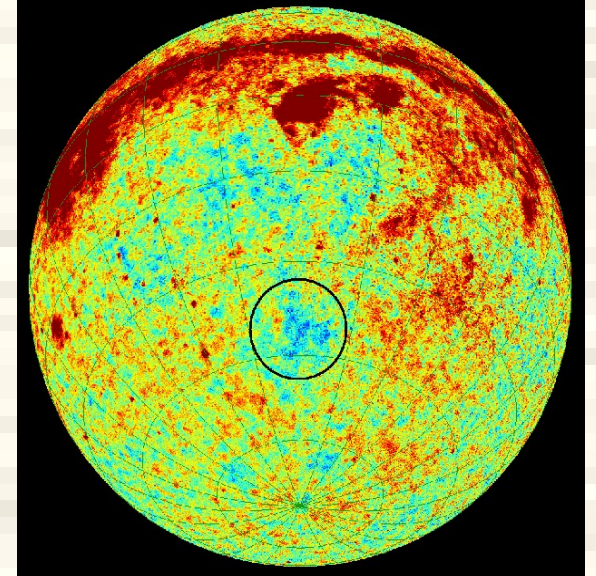




ILC

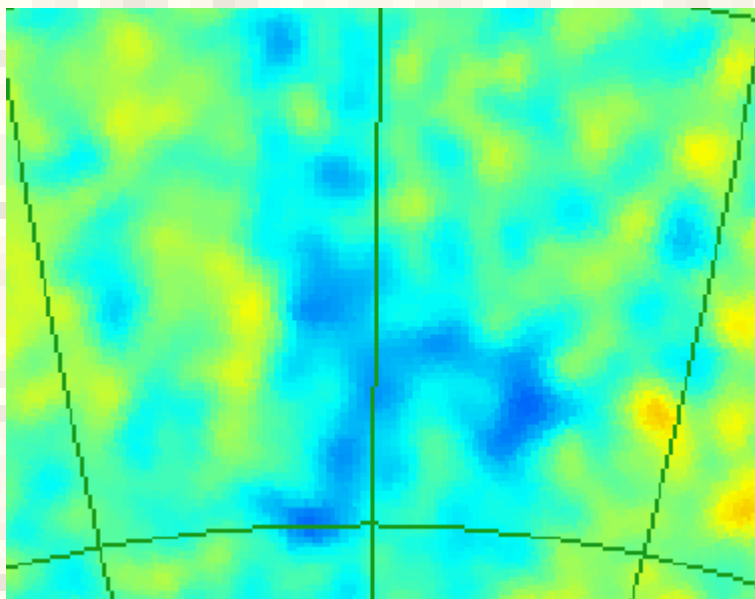


K - band

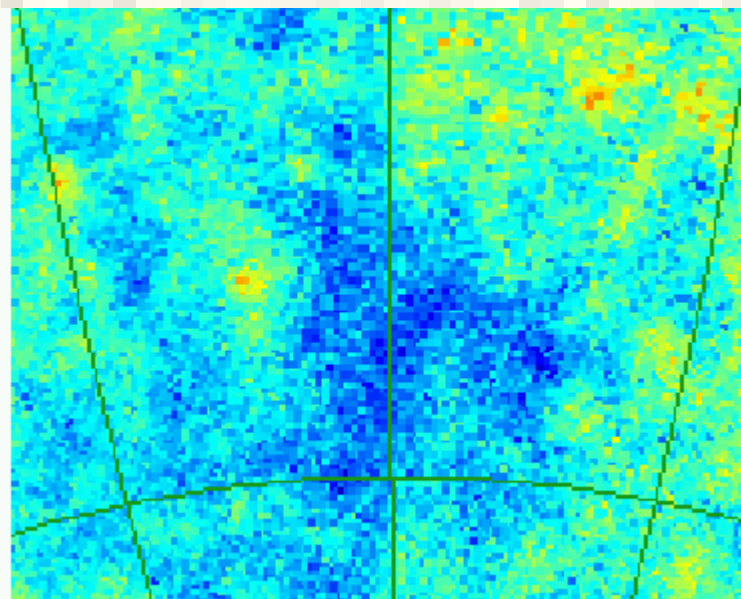


Ka - band

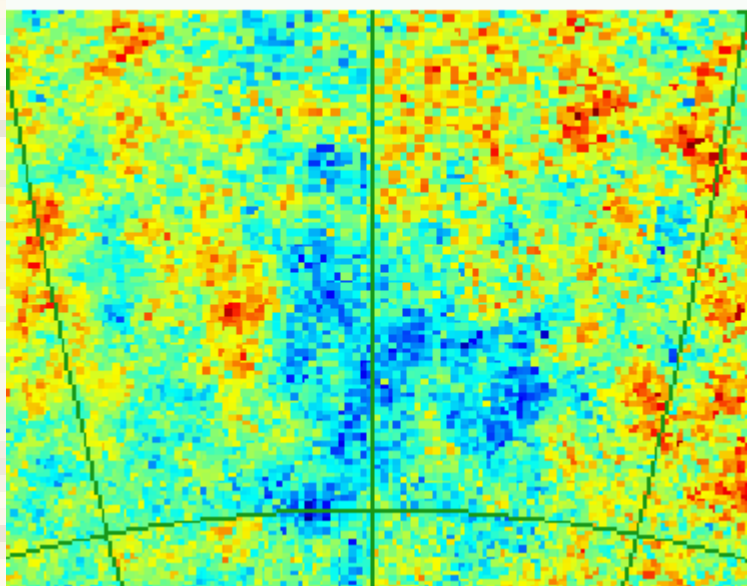
ILC



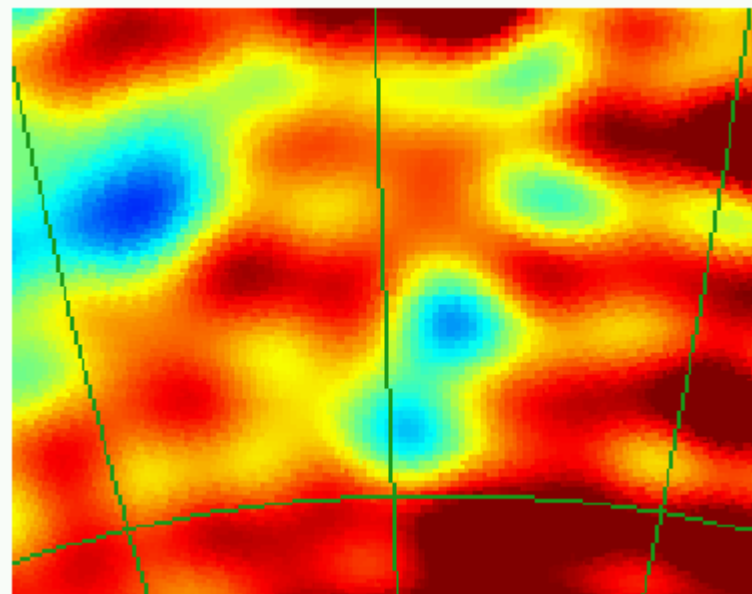
K

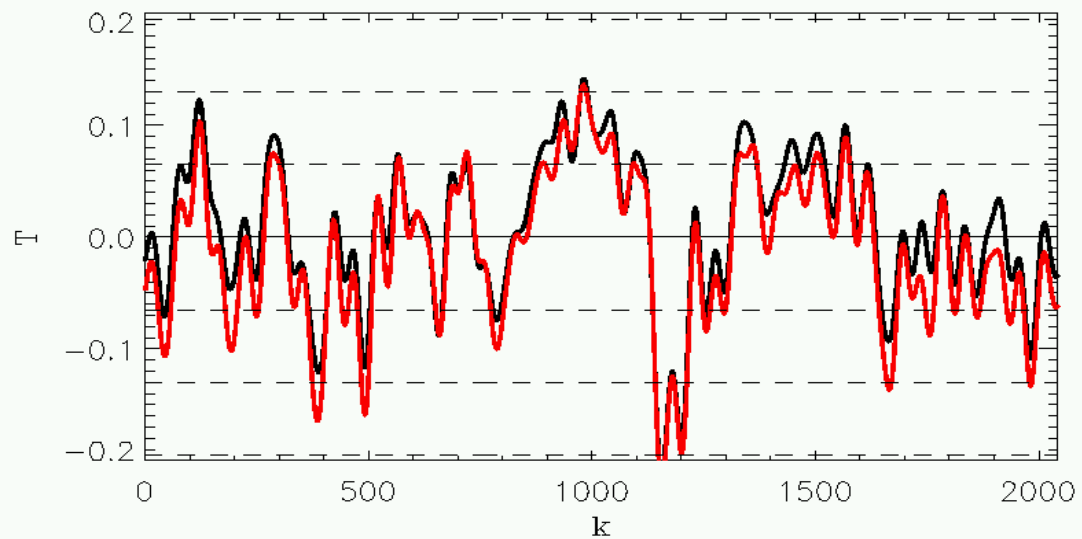


Ka

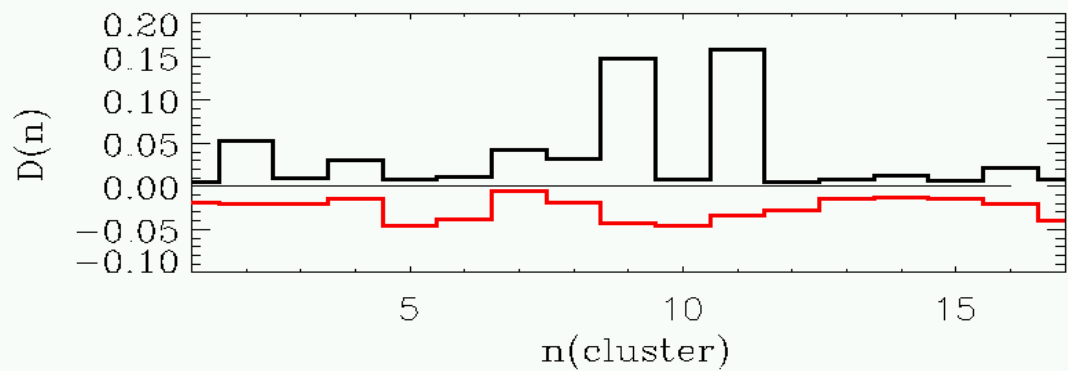


Haslam
et al.

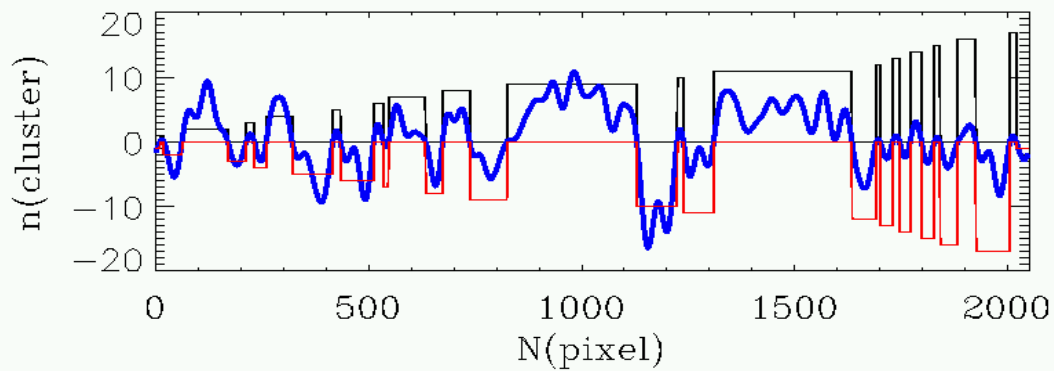


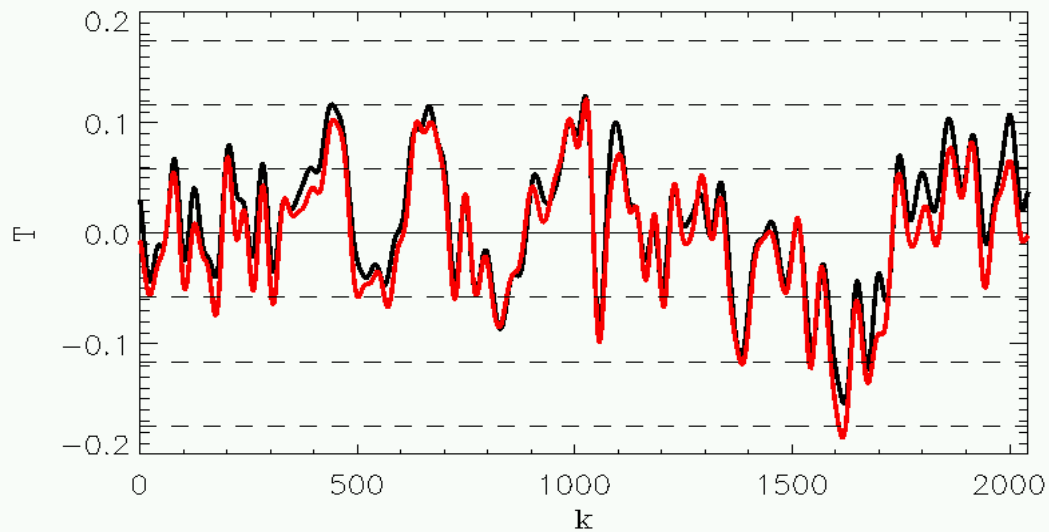


ring
 $b = -57 \text{ deg}$

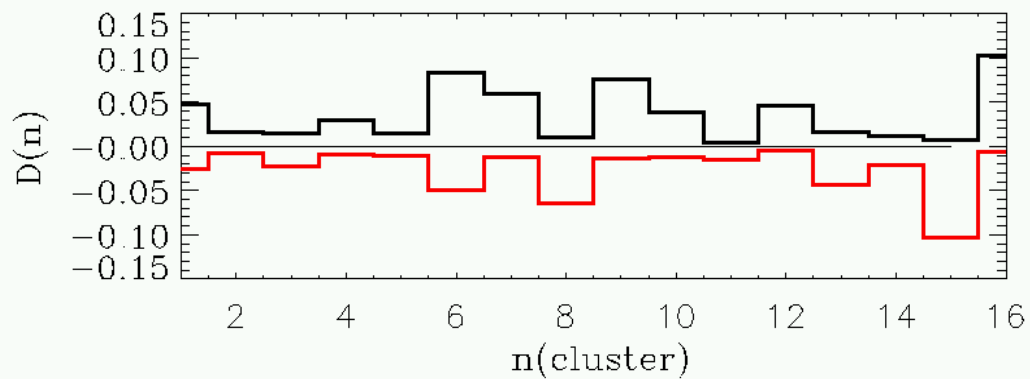


Длина кластера
 vs номер кластера

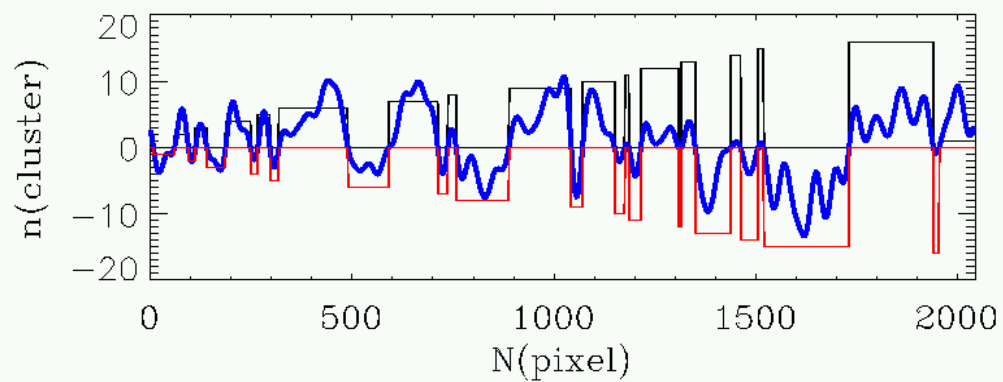




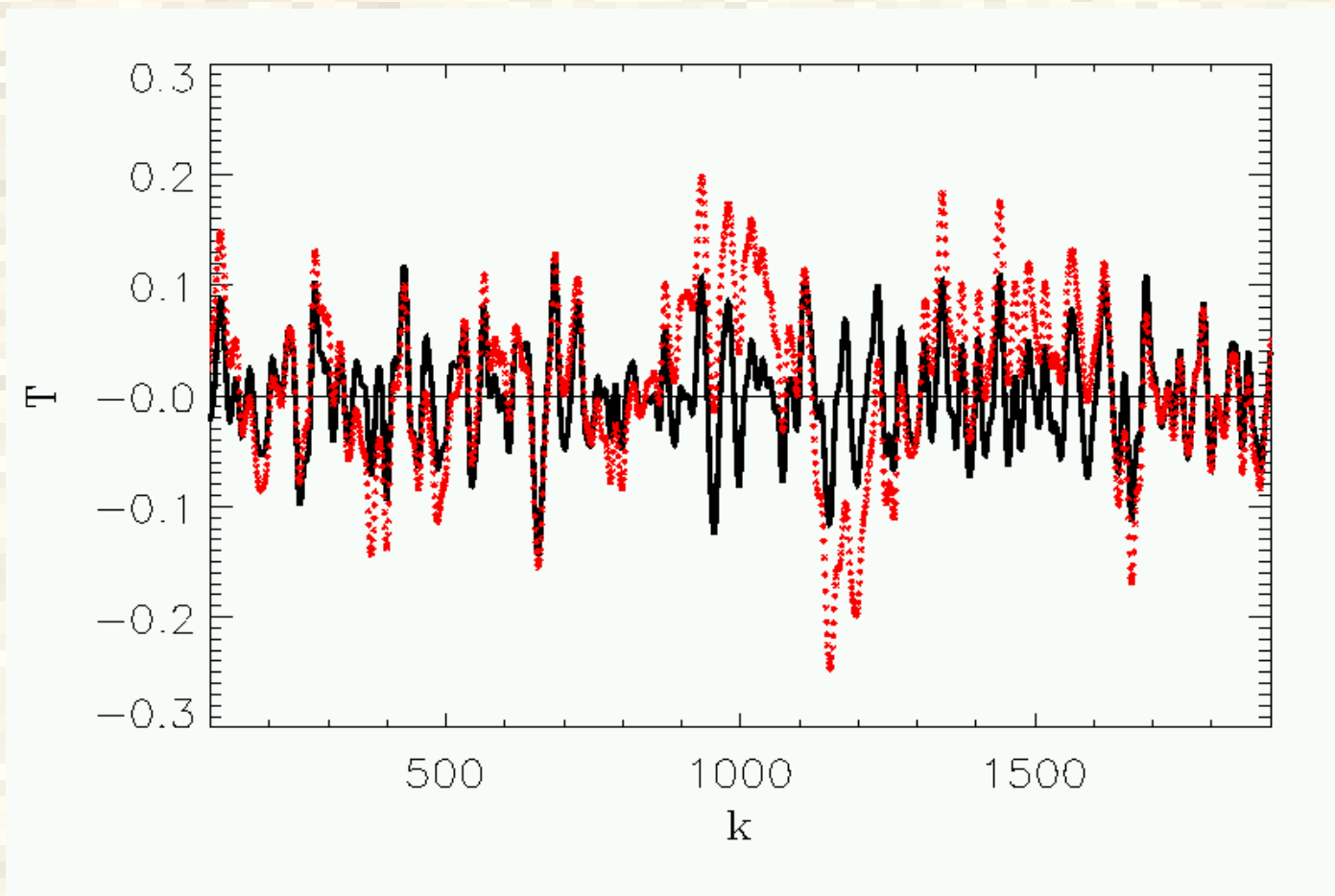
ring
 $b = 57 \text{ deg}$

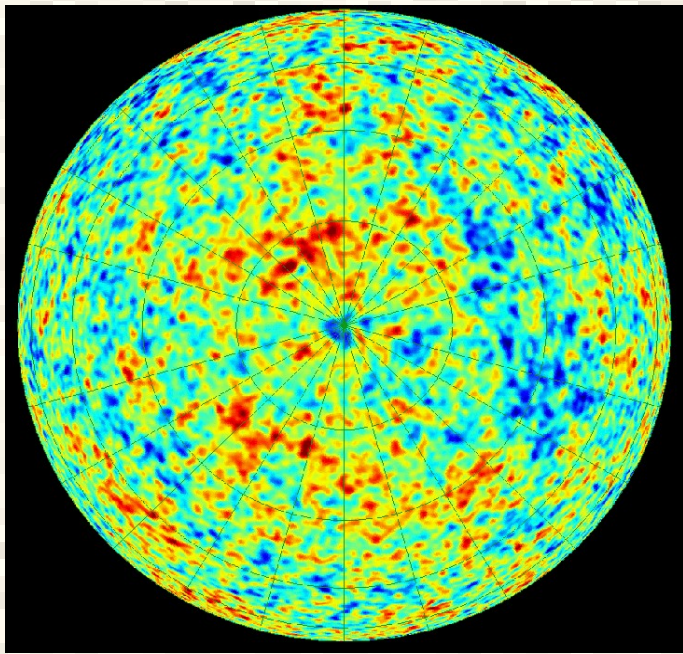


Длина кластера
 vs номер кластера

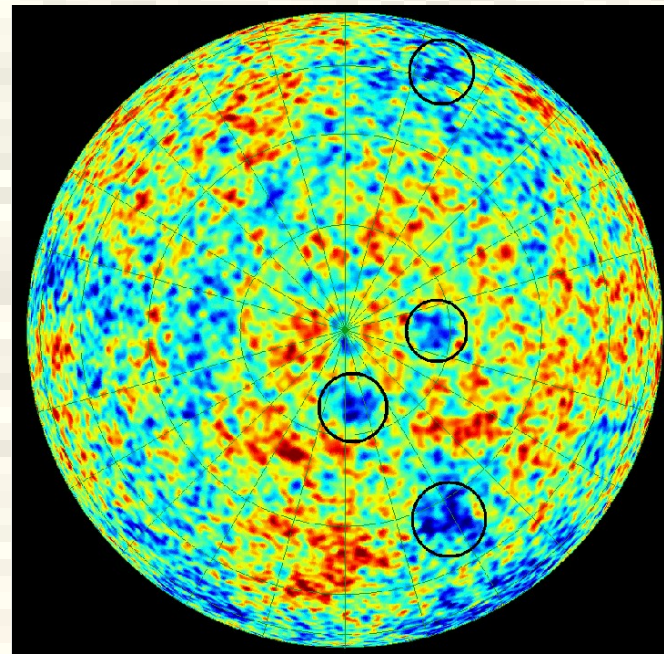


“Де-кластеризация”

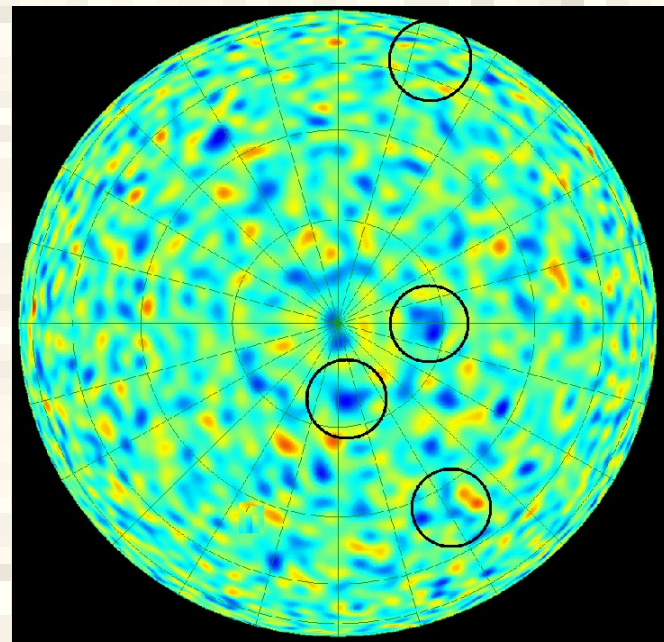




North

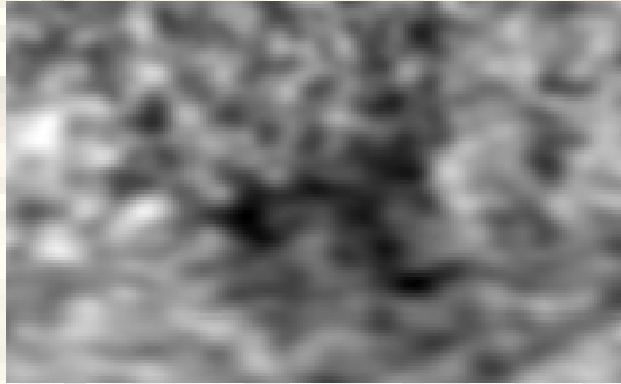


South

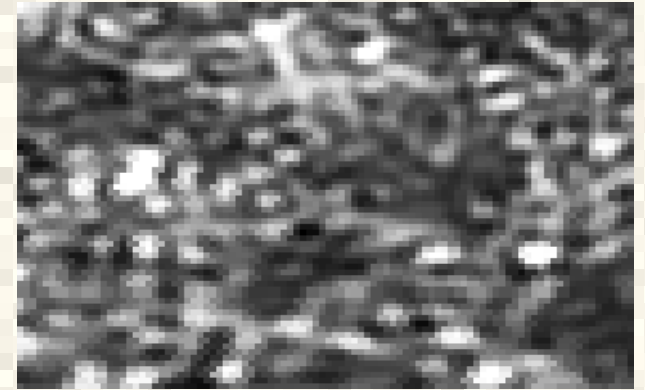


Вычет первых
20 мультиполей

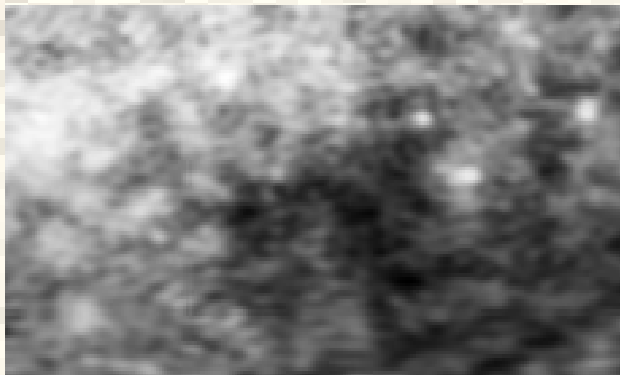




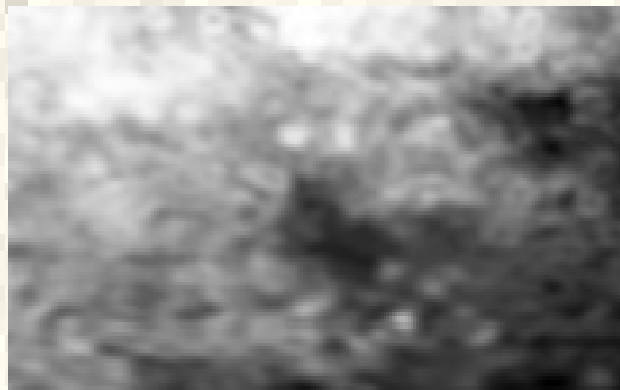
ILC



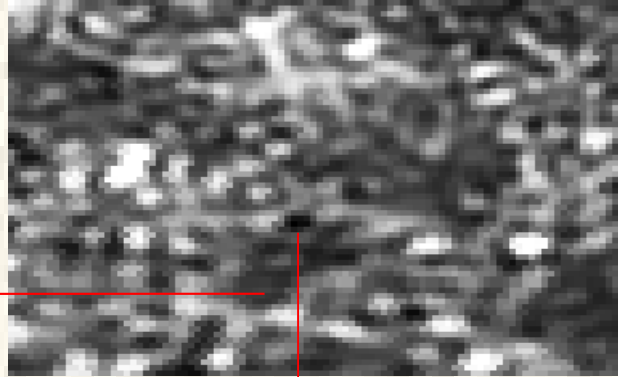
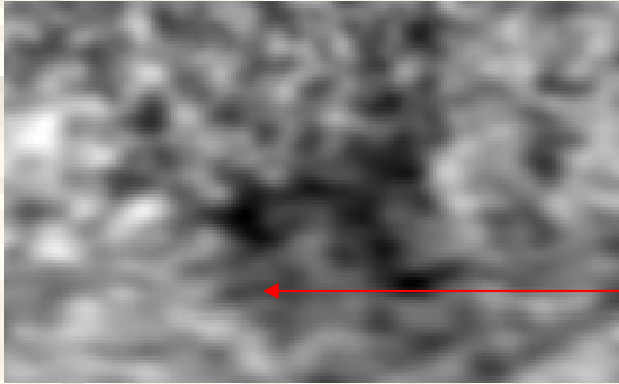
2MASS



K-channel, 23 GHz



Haslam et al: 408 MHz



2MASS

ILC

